

Island Hot Food Merchandiser

IS-HT-MR-ST-3X5, IS-HT-MR-ST-3X6, IS-HT-MR-ST-4X6
 IS-HT-MR-DT-3X5, IS-HT-MR-DT-3X6, IS-HT-MR-DT-4X6

APPLICATIONS

- Self-service merchandiser for packaged hot foods such as rotisserie chicken, Ready-to Eat meats/meals
- Overhead Heating + Hot Plate & Shelf
- Heated deck plates radiate warmth uniformly

STANDARD FEATURES

CABINET CONSTRUCTION

- Base Cabinet consists of 3/4" plywood finished in high pressure plastic laminate
- Stainless steel countertop
- One row of protective vinyl bumper guard + corner protectors
- 6" black or stainless steel toe-kick base

HEATED SHELVEING

- Shelves & deck - stainless steel with steel rod or tempered glass product stops
- Shelves provided with NSF-4 overhead warmers with infinite temp. control
- Digitally controlled, NSF-4 heated deck plates radiate warmth uniformly keeping product at optimum temperature.
- LED lighting under shelves

ELECTRICAL REQUIREMENTS

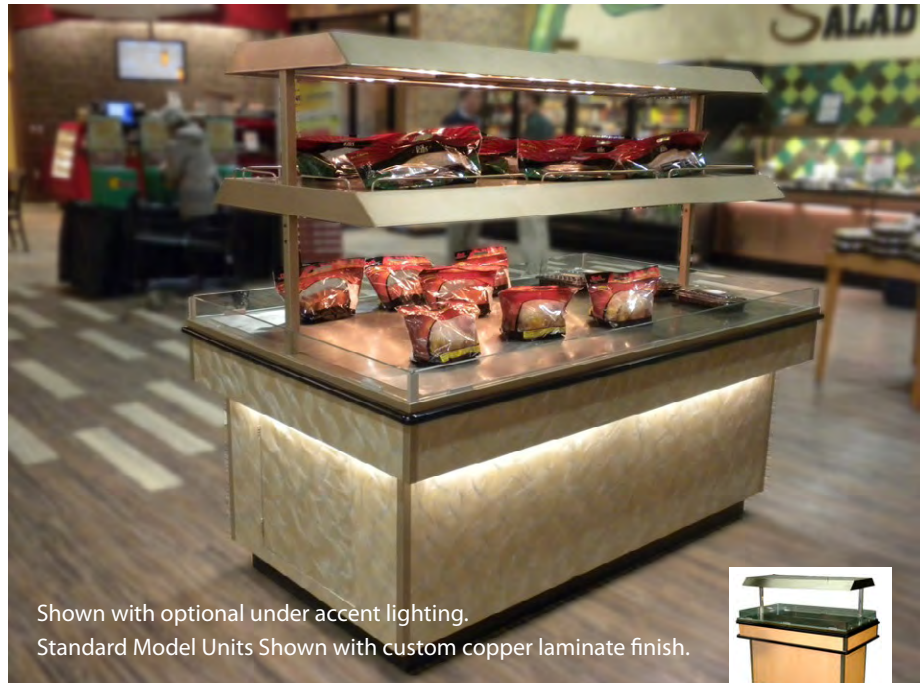
- Pre-wired and furnished with a junction box for use on a dedicated 120/208V, 60Hz, 1 phase circuit
- Built in accordance with NEC, UL and NSF standards.

WARRANTY

- One year - Parts and Labor

OPTIONS / ACCESSORIES

- Powder coated canopy assembly
- Assorted colors for vinyl bumper
- Mirrored or stainless steel accent strip
- Contact factory representative for assorted finishes.
- Casters may be added to base for mobility
- Circuit Breaker in lieu of junction box

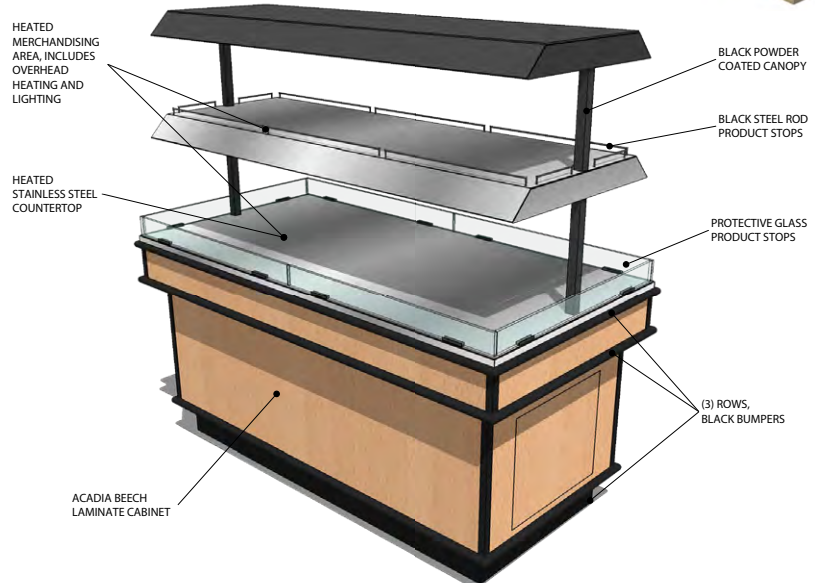


Shown with optional under accent lighting.
 Standard Model Units Shown with custom copper laminate finish.



2 models available: Single Tier & Double Tier

See reverse for dimensions



Rendering depicts *Double Tier - 3'x 6'* model. Shown with custom finish selections including powder coated canopy assembly

Engineered for stores with ambient conditions not to exceed 75°F and 55% relative humidity. Due to continuous improvements specifications may change without notice.

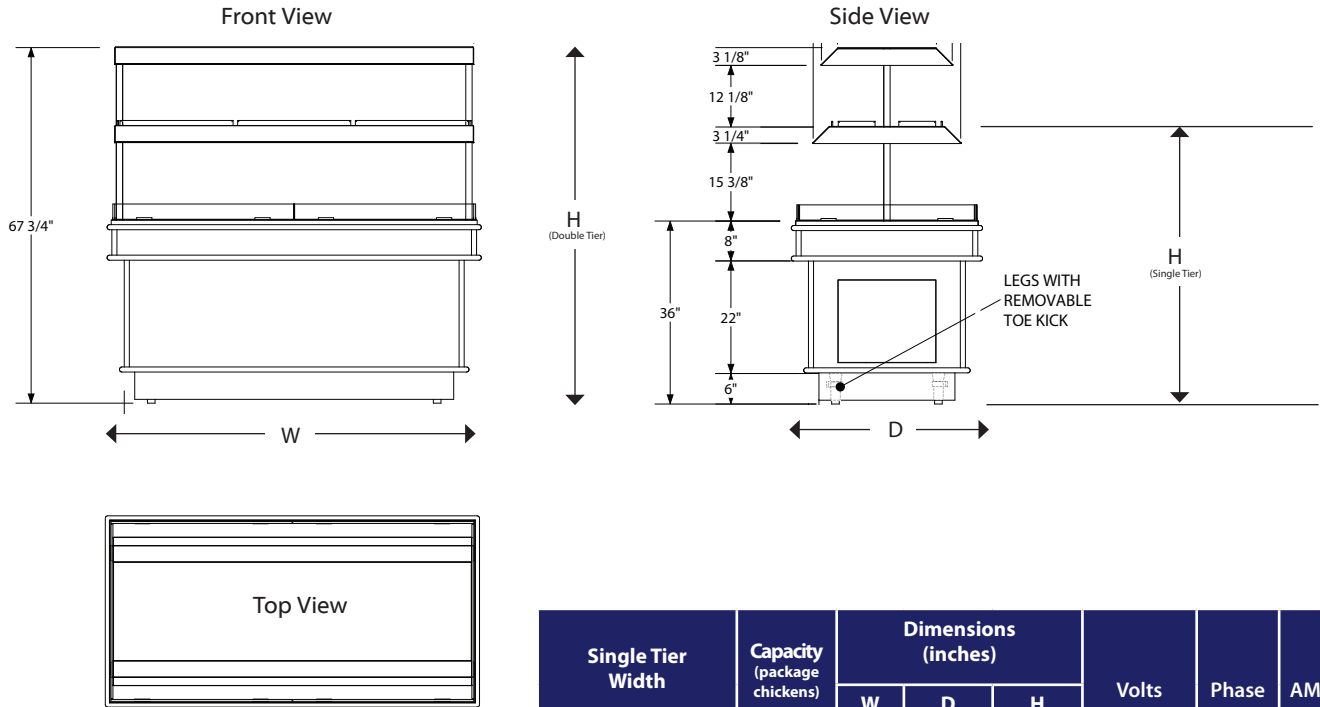
Built to meet the following specifications:



Intertek

Island Hot Food Merchandiser

IS-HT-MR-ST-3X5, IS-HT-MR-ST-3X6, IS-HT-MR-ST-4X6
 IS-HT-MR-DT-3X5, IS-HT-MR-DT-3X6, IS-HT-MR-DT-4X6



Single Tier Width	Capacity (package chickens)	Dimensions (inches)			Volts	Phase	AMPS
		W	D	H			
3' x 5'	14	56.5	36.75	52.5	120	1	34.2
3' x 6'	18	68.5	36.75	52.5	120	1	42.8
4' x 6'	31	80	48	52.5	120/208	1	32.5

Double Tier Width	Capacity (package chickens)	Dimensions (inches)			Volts	Phase	AMPS
		W	D	H			
3' x 5'	26	56.5	36.75	67.25	120	1	47.3
3' x 6'	32	68.5	36.75	67.25	120	1	59.4
4' x 6'	49	80	48	67.25	120/208	1	40

ELECTRICAL SPECIFICATIONS - (BASED ON A 3' X 6', DOUBLE TIER MODEL)

ELECTRICAL REQUIREMENTS - ON 6' CORD NEMA 14-20F PLUG

QTY	DESCRIPTION	MANUFACTURER	MODEL #	VOLTAGE	AMPS EA	L-1 AMPS	L-2 AMPS	BREAKER RATING
1	OVERHEAD HEAT	HATCO	GRAHL-60L	120	11.665		11.665	15A DOUBLE
1	HOT PLATE	HATCO	GRSBF-60-0	120	14.6		14.6	20A SINGLE
2	OVERHEAD HEAT	HATCO	GRAHL-60L	120	11.665	23.33		30A SINGLE
1	DISPLAY LIGHT	HATCO	HL-60	120	4.5		4.5	15A SINGLE
1	OVERHEAD HEAT	HATCO	GRAHL-60L	120	11.665	11.665		15A SINGLE
TOTAL AMPS PER LINE							34.995	30.765
TOTAL ELECTRICAL REQUIRED IS 120/208 V, 60 Hz, 1 PH							34.995	AMP LOAD, 4 WIRES